

Resource Manager-DB for Sage Software

How It Works

The Sage Link contains pre-built import masks to automatically load Resource Manager-DB directly from Sage data tables and Sage Export Reports. In addition, you can edit each mask and new masks can be created for mapping virtually any data over to Resource Manager-DB.

Next, Resource Manager-DB contains special Groups that combine a series of Masks, along with special processing, to automatically import Bills-Of-Material, Routings, Sales Orders, Work Orders, WIP, etc., and pre-process into the flexible and customizable functions included with Resource Manager-DB.

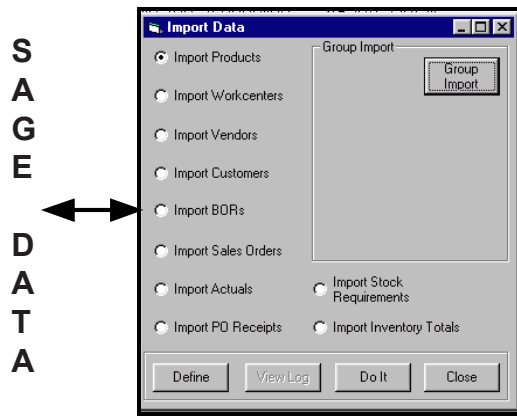
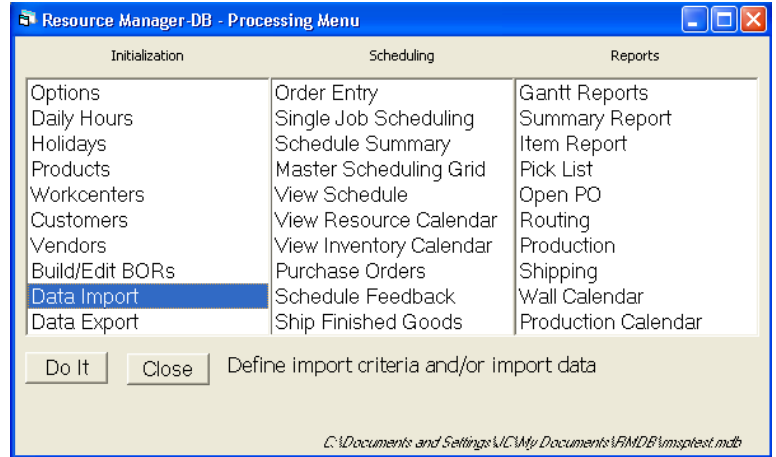
Additional visual selection grids make it a snap to access desired data. Now, all the MS Office centric planning, scheduling and visualization tools that are part of Resource Manager-DB can be leveraged to maximize your Sage Software Solution.

Peachtree Customers:"Ideal Solution"

Adolph Gottscho, Inc., a leading manufacturer of imprinting and coding equipment located in Union, NJ, utilizes Resource Manager for job costing, production planning and scheduling. "Originally, we had a manufacturing package that we used for job costing and MRP", reports Bob Schoemer, Operations Manager, "When that system became obsolete and unusable for our needs, we were faced with a dilemma - do we invest a lot of money in an expensive, complicated MRP system that wasn't even guaranteed to work, or do we try to patch something together in-house using custom databases and spreadsheets?" Bob continues, "With Resource Manager we found the ideal solution - the benefits of a custom system combined with capabilities normally included in high end systems, at a very affordable cost".

Mr. Schoemer reports, "We have integrated Resource Manager directly with our accounting package, downloading part numbers, part names, even cost and inventory levels. Then, using the simple format and menu driven commands, we quickly and easily configure Bills-Of-Resources that contain time-phased material requirements, workcenter routings, and standard costs. User Solutions' products provide our company a competitive advantage for delivering to our customers the lowest cost, highest quality product on time and within budget. Best of all, we remain in complete control of how, when, and where we use Resource Manager - we appreciate software that adapts to our situation instead of forcing us to adapt to someone else's idea of how an operation should be run."

For More Information Contact US Today!
User Solutions, Inc. (800) 321-USER (8737)
ph: 248-486-1934 fax -6376
email: us@usersolutions.com
www.UserSolutions.com



Job Number	Friday 2/16/2007	Saturday 2/17/2007	Sunday 2/18/2007	Monday 2/19/2007	Tuesday 2/20/2007
4836_2202007	GP1R9K4R2 Qty: 1218				
4837_2202007		GP1S4R1P5 Qty: 1680		GP1Q2P1R2 Qty: 360	
4843_2202007				GP1Q2R1PE Qty: 198	
4842_2202007					
4838_2202007		GP1S4R1P5 Qty: 6438			
4839_2202007			GP2S4P1R2 Qty: 2244		
4840_2202007				GP2Q8P4Q3 Qty: 294	
4845_2202007				GP2R9P1R2 Qty: 3300	
4841_2202007				GP1Q8P4Q3 Qty: 294	
4846_2202007				ST1Q6S8Q1 Qty: 954	
4848_2202007				GP2R9P4Q3 Qty: 558	
4849_2202007					GP2R9P4Q3
4850_2202007					GP2Q8P4Q3
4844_2202007					GP1P6W2R Qty: 426

Job	2/18/2007	2/19/2007	2/20/2007	2/21/2007	2/22/2007	2/23/2007	2/24/2007
Detail Saw	0	0	0	0	8.04164	5.61082	0
Lay Up Line	10	20	20	20	10	2.70584	0
Panel Oiler	0	0	1.98432	5.75328	2.33376	2.33376	0
Patch Station	0	0	0	0	0	0	0
Poly Line	0	19.93829		20	19.88171	6.00256	0
Rip Saw	0	0	0	0	0	0	0
Sander	0	7.26998					
Skinner Saw	0	8.35965					
Spreader	0	0					
T&G	0	4.67513					