

Resource Manager-DB

for **Exact®** software

How It Works

The Exact Link contains pre-built import masks to automatically load Resource Manager-DB directly from Exact data tables. In addition, you can edit each mask and new masks can be created for mapping virtually any data over to Resource Manager-DB.

Next, Resource Manager-DB contains special Groups that combine a series of Masks, along with special processing, to automatically import Bills-Of-Material, Routings, Sales Orders, Work Orders, WIP, etc. and pre-process into the flexible and customizable functions included with Resource Manager-DB.

Additional visual selection grids make it a snap to access desired data. Now, all the MS Office centric planning, scheduling and visualization tools that are part of Resource Manager-DB can be leveraged to maximize your Exact System.

Exact / Macola End User: "Cost Effective and Flexible"

Milwaukee Sign Company, located in Grafton, WI, produces signage for major oil companies, quick service restaurants and retailers in the U.S. and around the world. According to Thomas Bohmann, Director, Strategic Projects, "We've been using Macola for 6 years utilizing Routings, Shop Floor Control & Manufacturing Cost Accounting. Recently we analyzed our business and concluded Production Order Processing provides us with all the capabilities we need while saving us considerable administrative costs & maintenance fees.

"Our one reservation during the decision making process was the ability to schedule work centers according to capacity restraints. This is when Macola suggested I explore User Solutions' scheduling system Resource Manager, as a possible link to POP in Macola. User Solutions was very receptive to our ideas and, after a joint effort in understanding both systems, User Solutions has customized a link between Macola & Resource Manager to support our goals for automated integration.

"We are now able to import POP work orders into Resource Manager for scheduling purposes using Value Added Cost Types & Product Structure Costs to load the work centers for capacity planning. Scheduled due dates are updated in Resource Manager & automatically sent back to Macola to update work order due dates & sales order required ship dates.

"The capabilities of Resource Manager & the link to Macola will give us the needed scheduling tool to plan resources & confirm product ship dates for our customers.

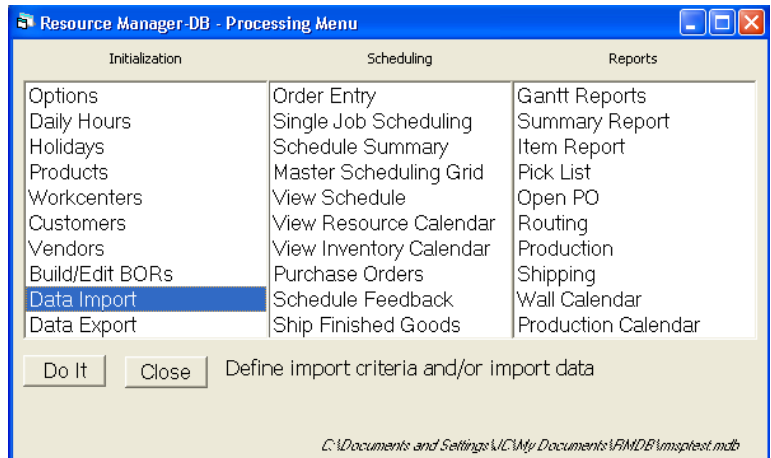
"Resource Manager is a cost effective software tool that goes well beyond our needs, but has the flexibility where we can utilize what we need & still maintain the integration of our Macola modules without duplication of effort. I'm looking forward to a continuing relation with User Solutions".

For More Information Contact US Today!

User Solutions, Inc. (800) 321-USER (8737)

ph: 248-486-1934 fax -6376

email: us@usersolutions.com www.UserSolutions.com



EXACT DATA

